

GARDEN STATE SIBERIAN HUSKY CLUB NEWSLETTER

INSIDE THIS ISSUE:

2	President's Message; 2009 Activities Calendar
3	Achievements, Howls, & Brags
4	What's In A Howl?

- Deadline for submission of articles, howls, etc. for the next issue is June 10, 2009.
- Next issue of the **GSSHC Newsletter** will be at your local newsstand or mailbox on or about June 14, 2009.
- Club web site: <http://www.gsshc.com>
- Club central email: gsshc@gsshc.com

Subscription included with Club membership. Non-member subscriptions are \$10.00 per year.

It is the policy of this Newsletter to publish the contributions of Club members. The views expressed, however, are not necessarily those of the editor and staff or of the GSSHC. Contributions are encouraged. Please do not submit copyrighted information without the permission of the copyright owner. Other Siberian Husky Newsletters to which we directly mail may use articles submitted here as long as the same privilege is extended to our Club.



OFFICERS & BOARD MEMBERS

<p><u>President</u> Lynne Kerstetter 609-601-2265 kunasibesk@aol.com</p>	<p><u>Vice-President</u> Mike Marion 908-735-6015 marionhills@comcast.net</p>
<p><u>Treasurer</u> Michele Szczepanski 609-965-2862 RocklandMS@aol.com</p>	<p><u>Corr./Rec. Secretary</u> Michele Szczepanski 609-965-2862 RocklandMS@aol.com</p>
<p><u>Board of Directors (2)</u> Carol Wicki 908-637-4943 madchen2@comcast.net (Class of 2009)</p>	<p>Maggie Marion 908-735-6015 marionhill@patmedia.net (Class of 2010)</p>
<p><u>President Emeritus</u> Irwin Linker 908-213-6957 link@siberlink.net</p>	<p> 9-11-2001</p>

President's Message

No President's Message

2008 Activities Calendar

The currently scheduled events on the 2009 GSSHC calendar.

DATE	EVENT	LOCATION
January 16	General Meeting (8:00pm)	Cancelled
February 20	General Meeting (8:00pm)	Cancelled
March 27	Annual Eye Clinic (4-8PM) The Registration Form is available on the GSSHC website, http://www.gsshc.com , via a link on the home page.	Somerset 4-H Center North Branch, NJ
April 17	General Meeting (8:00pm) Nominations from the Floor	Cancelled
May 15	Annual Meeting (8:00pm) Elections, Annual Awards	TBD
May 24	Supported Entry Plainfield KC	East Freehold Park Freehold, NJ

Achievements, Howls, & Brags



Ruth Henningsen & Elaine Barone:

Olympus Sea Cruise At Sno-Arch CD, RE, CGC: *1st Place in Open A & High In Trial with a 192.0 for his 2nd CDX leg* at the CT Valley SHC Specialty on Feb. 14.

Mike & Mary Spatz:

CH. Siberlink's Silver Shadow RN, CGC: *BOB* at the New Brunswick KC on Mar. 20; *qualified in Rally Advanced for his 2nd RA leg* at the Lower Camden County DTC on Mar. 22.

Siberlink's Crystal Glow: *RWB* at the New Brunswick KC on Mar. 21; *qualified in Rally Novice for her RN title* at the Lower Camden County DTC on Mar. 22. *Congratulations!!!*

Cindy & John Geertsema:

Micast Man In The Mirror: *1st in 6-9 Month Puppy Dog Sweeps & 1st in 6-9 Month Puppy Dogs* at the CT River Working Group Assoc. on Mar. 14; *1st in 6-9 Month Puppy Dog Sweeps & 1st in 6-9 Month Puppy Dogs & BP* at the CT River Working Group Assoc. on Mar. 15; *WD, BOW for 1 pt.* at Troy KC on Apr. 4; *RWD* at Great Barrington KC on Apr. 5.

CH. Rockland's The Iceman Cometh: *BVSW* at the CT River Working Group Assoc. on Mar. 14.

Micast Micast Keeper Of The Flame: *RWB* at the CT River Working Group Assoc. on Mar. 15.

Michele Szczepanski & Rose Bucci:

Rockland's Just A Doll:

Rockland's Everybody Loves Him:

Rockland's The Girl Next Door:

Irwin & Lois Linker:

Am. Can. CH. Marionhill Chairman Of the BD UD, RAE, MX, MXJ, AXP, MJP, NF, NFP, CGC, TDI, Can. CD: *qualified with a 2nd Place in Excellent B Preferred Standard for his MXP title for her CD title* at the Delaware County KC on Feb. 28. *Congratulations!!!*

Am. Can CH. Arlington The Critic's Choice RN, NA, OAJ, CGC: *qualified in Novice B for her CD title* at the First DTC of NNJ on Mar. 15; *qualified in Open Standard for her OA title* at the Delaware County KC on Apr. 4. *Congratulations!!!*

CH. RedRiver;s Travellin' Man CD, RN, NA, OAJ: *qualified for his 1st leg in Excellent A JWW & his 1st Novice FAST leg* at the Tail Blazers AC on Mar. 8; *qualified with a 2nd place in Novice FAST for his NF title* at Delaware County KC on Apr. 5. *Congratulations!!!*

Siberlink's Hot Diggity Dawg: *RWD* at Saw Mill River KC on Mar. 8 & at Lancaster KC on Mar. 13; *RWD, BP, Puppy Group 3* at New Brunswick KC on Mar. 20; *BP, Puppy Group 1* at New Brunswick KC on Mar. 21.

Edie Weinstein & Lynne Kerstetter:

Mochamco's Blue White Diamond:

Kunu's McDreamy Of Mochamco:

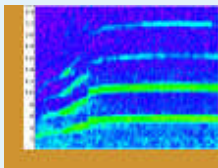
Ed. Note: Our apologies if we missed your brags. We can only print results from the information available at press time. If the AKC or superintendents have not published it or if you have not sent me an email, then I don't know what your brag is. If you would like to add your brag to the next Newsletter, please email Link.

[What's in a Howl?](#)

by Fred H. Harrington
Professor of Ethology
Mount Saint Vincent University, Nova Scotia

Ask anyone about wolf vocalizations and the howl invariably springs to mind. Even though wolves bark, woof, whine, whimper, yelp, growl, snarl and moan a lot more often than they howl, it is howling that defines the wolf, and fascinates us. So why do wolves howl?

The center of a wolf's universe is its pack, and howling is the glue that keeps the pack together. Some have speculated that howling strengthens the social bonds between packmates; the pack that howls together, stays together. That may be so, but chorus howls can also end with nasty quarrels between packmates. Some members, usually the lowest-ranking, may actually be "punished" for joining in the chorus. Whether howling together actually strengthens social bonds, or just reaffirms them, is unknown.



We do know, however, that howling keeps packmates together, physically. Because wolves range over vast areas to find food, they are often separated from one another. Of all their calls, howling is the only one that works over great distances. Its low pitch and long duration are well suited for transmission in forest and across tundra, and unique features of each individual's howl allow wolves to identify each other. Howling is a long distance contact and reunion call; separate a wolf from its pack, and very soon it will begin howling,

and howling, and howling...

For the following examples of howling, you can "read" the sound spectrograph as you listen to the howls. For each spectrograph, the pitch of the sound is displayed on the vertical axis, so howls low in pitch are nearer the bottom, and howls high in pitch will be found toward the top. Time is represented along the horizontal axis, going from left to right, just as you are now reading this text. A howl that is unmodulated in pitch would appear as a straight line across the screen. Most howls show some degree of modulation, so they look like rolling hills or steep ridges leading to or falling away from plateaus. In addition to its so-called fundamental, or lowest frequency, most howls have harmonics, which appear as higher and higher bands of sound that run parallel to the fundamental on the sonagram.



Newsletter and Howl Submissions

See Submission Information below for where to send your Howls, or any other information for the **GSSHC Newsletter**. You may leave a message on my answering machine, 908-213-6957, but leave **only** your name, phone number and a brief message; I'll call you back for the details. To insure accuracy, also send the information to me one of the ways provided below. **Email is the preferred method for submission of material.**

Mailing address:

Irwin Linker
GSSHC Newsletter
74 Stewartville Road
Stewartville, New Jersey 08886

Email (preferred method): siberlink@comcast.net

Send only .doc or .jpg files.

Address or Email Changes????

We know some of you have had changes in your email or US Mail addresses. Since future Newsletters will be available online only, we need your current email address to notify you when a new issue of the Newsletter is available. Additionally, email has become the primary communication vehicle for the Club and a current address enables you to receive all pertinent GSSHC-related information. Please send these changes to the Club Secretary.

More Newsletter Changes

The Newsletter will continue to be available on the GSSHC website. It will also be sent to all GSSHC Club members with a valid email address as a PDF attachment. Soon back issues of the GSSHC Newsletter will be available on the Club website.

Note: Per Club rules, information about litters must be accompanied by OFA/SHOR/CERF information on the parents.